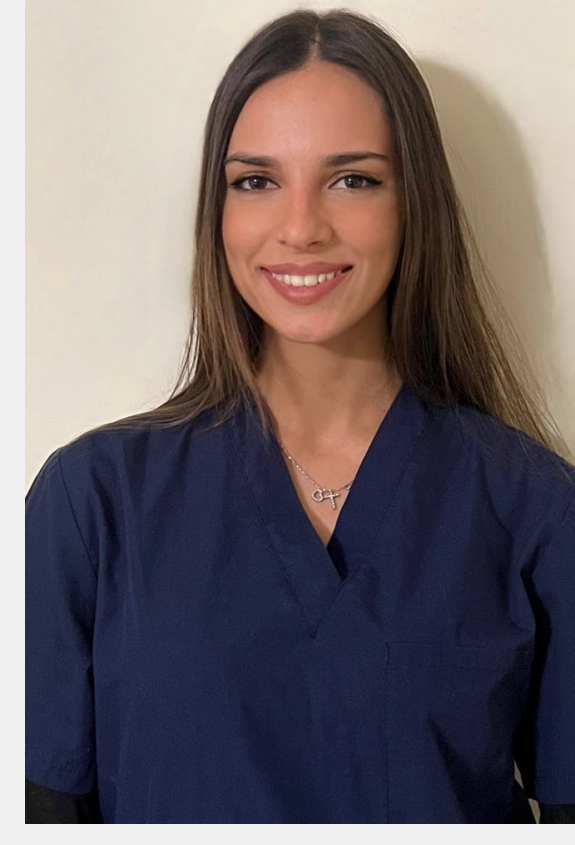


Global Clinical Case Contest 2022-2023



Student:
Margherita Feliciotti
Tutor:
Giulio Pavolucci
University:
University of Siena
Country:
Italy



Introduction to the case

A 45 y.o. female patient came to the clinic complaining about the aesthetic appearance of her smile. Tooth 2.1 was heavily discolored, 1.2, 1.1 and 2.2 showed old restorations with secondary caries. Minor misalignment and shape defects were also referred as disturbing by the patient. An endodontic retreatment was scheduled, followed by internal bleaching with hydrogen peroxide. Then, direct composite veneers from 1.3 to 2.3 were chosen as treatment plan



Initial situation: Discromic 2.1, secondary caries, slight misalignment and shape defects.



Final situation at the two weeks control.

Treatment steps



Post internal bleaching

After the endodontic retreatment, tooth 2.1 was internally bleached.



Rubber dam isolation

Rubber dam isolation is mandatory to perform adhesive procedures.



Cavities preparation

Old fillings and secondary caries were removed. Additional clamps were used to enhance isolation. Selective etch approach with a universal adhesive (Prime&Bond Active) was used.



Opaque layer to stop translucency

An opaque layer (Ceram.x Spectra ST Effects D1) was free-hand layered to block the light.



Changing the shape

The shape of the central incisors was modified in order to have better proportions, using an high value universal mass (Ceram.x Spectra ST A1).



Laterals and canines

The same procedure was applied to free-hand layer the two lateral incisors and the two canines.



Contouring and transition lines

Shape and transition lines were enhanced using a pencil. Then contouring was done with fine grid diamond burs.



Finishing and polishing

Enhance PoGo kit was used to perfectly finish and polish the restorations.

Material and Method

After rubber dam isolation and elimination of old restorations, cavities were etched with **DeTrey Conditioner 36** phosphoric acid 36% gel, then rinsed and dried. The adhesion was performed using the universal adhesive system **Prime & Bond Active**. The opacity of the class IV cavities was enhanced using **Ceram.x Spectra ST Effects D1**, then the chameleonic features of the **Ceram.x Spectra ST A1** were exploited to create a new anatomy with a natural appearance. The finishing and polishing steps were performed by using **Enhance PoGo** complete system.

Discussion and Conclusion

New materials and techniques allow clinicians to be conservative even in aesthetic cases. Avoiding preparation for indirect solutions leads to more sound structure, and to less expensive treatments for our patients. We should always think forward: being additive means having more structure for future new restorations, especially in young patients. Mimetic composites help us to really simplify layering procedures, allowing even non expert operators to obtain nice aesthetic results.



Academy